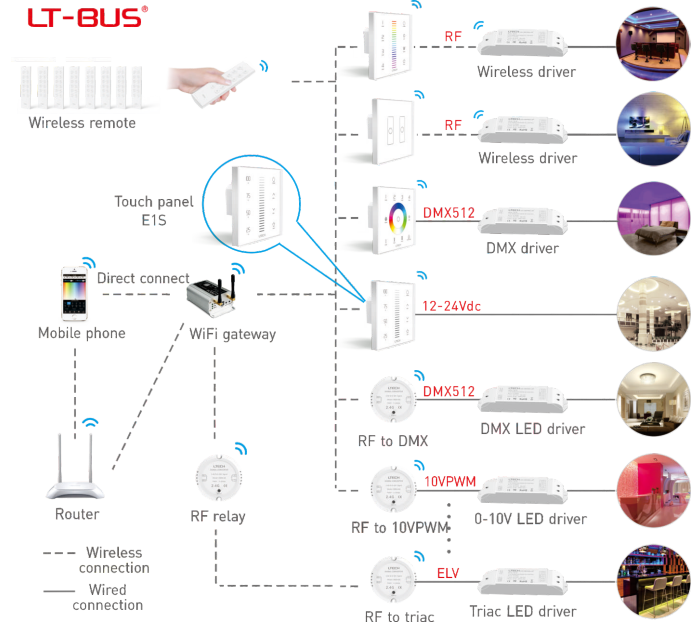


## E1S Touch Panel (Dimming)



Manual  
www.ltech-led.com



## Product Features

LTECH

- 2 in 1 function: RF wireless control and PWM power output.
- Power output, lamps can be connected directly, easy and convenient.
- Touch keys with chord and LED indicator.
- Save any scene you like, touch 1 key to recall scene, easy and convenient.
- Adopts capacitive touch control technology on the full color slider, makes LED dimming selection more user-friendly.
- Touch panel can be controlled by remote directly or smart phone if add a gateway.

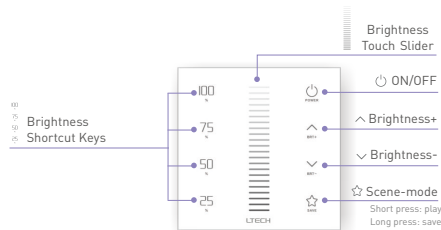
## Technical Specs

### E1S Dimming Touch Panel

Input Voltage:	12-24Vdc
Current Load:	Max. 8A
Output Power:	0-96W...192W
Wireless frequency:	RF 2.4GHz
Working Temp.:	-30°C-55°C
Dimensions:	L86×W86×H36(mm)
Package Size:	L113×W112×H50(mm)
Weight(G.W.):	225g

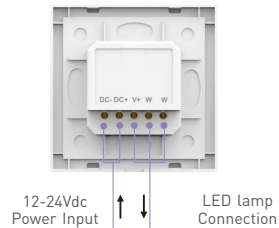
## Key Functions:

LTECH

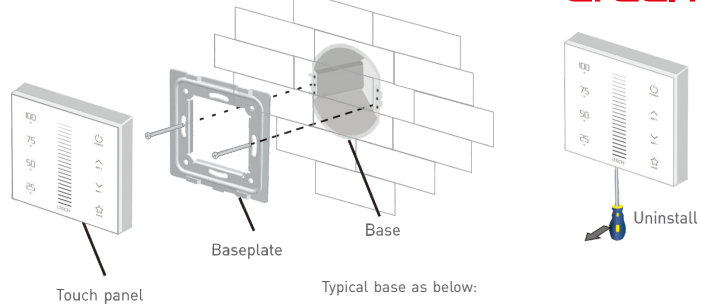


- \* When On/Off indicator light is on, long press to turn on/off buzzer.
- When On/Off indicator light is off, long press to match code.

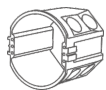
## Terminals:



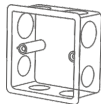
## Installation Instruction



Typical base as below:



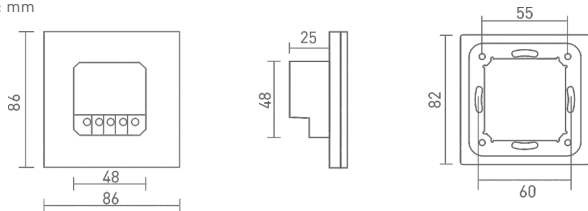
European style



86 size

## Product Size

Unit: mm

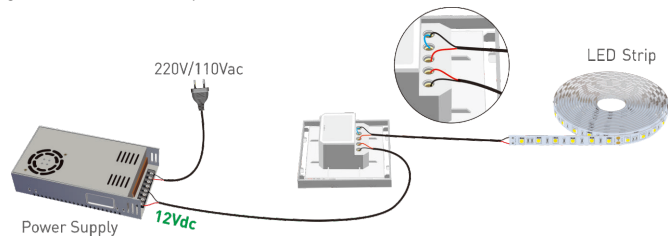


LTECH

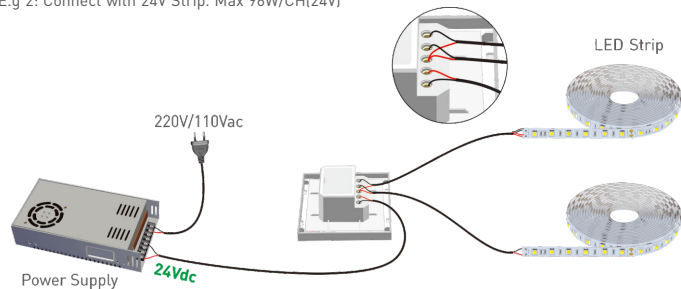
## Wiring Diagram

LTECH









E.g 1: Connect with 12V Strip. Max 48W/CH(12V)



E.g 2: Connect with 24V Strip. Max 96W/CH(24V)



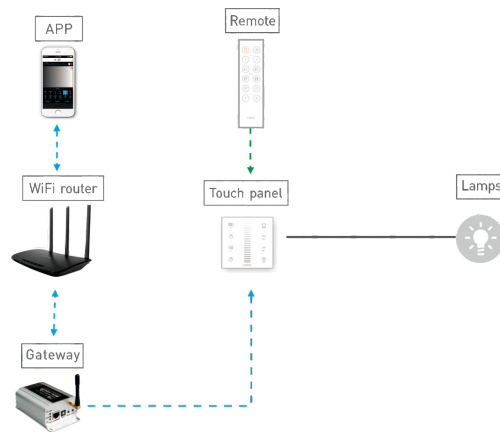
## Application Composition

1.   
Touch panel
2.  +   
Touch panel + Remote
3.  +   
Touch panel + WiFi master controller
4.  +  +   
Touch panel + WiFi master controller + Remote

LTECH

## Match Code Sequence

LTECH



\* PS: No WiFi router needed when gateway work with phones directly.

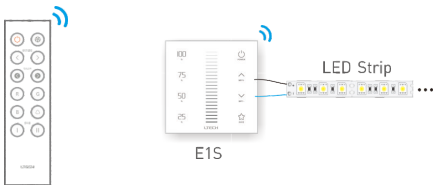
### Match Code Sequence

1. Configure gateway with touch panel, which enables the smart phone to control DMX device via gateway.
2. Configure remote with touch panel, which enables remote to control DMX device.

# RF Wireless Wiring

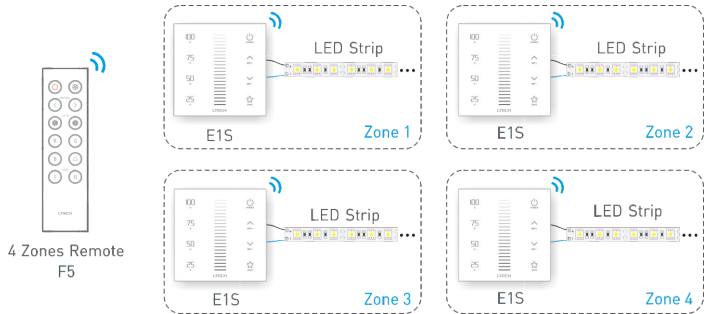


## Single Zone Control



Single Zone Remote F1

## Multiple Zones Control



4 Zones Remote F5

\* Touch panels can be sync controlled by multi remotes, please refer to the manual of remote's usage.

# Match Code between Touch Panel & Remote



1.

Long press on touch panel until all indicator lights flicker.



2.

Press any key on F1 remote (or the matching zone key on F5), the indicator light stop flicking, match successfully.



# Match code between touch panel & gateway

1.

Long press on touch panel until all indicator lights flicker.



2.

Click the corresponding DIM zone on mobile phone, then touch the color screen, match successfully.



## Clear code:



Press 25 ☆ on touch panel simultaneously for 5 seconds, the indicator light flicker several times, clear code successfully.

\* Please match/clear code when panel indicator light of On/Off is off.