

D series touch panel



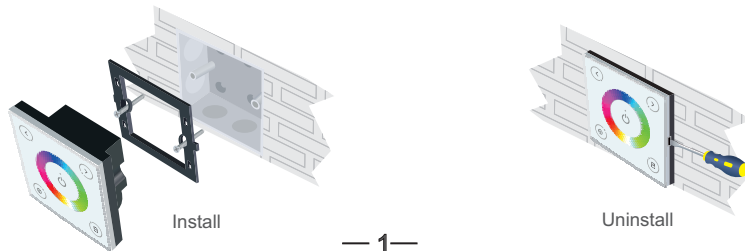
D3



1. Technical Specs:

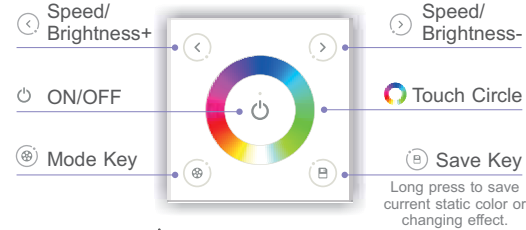
- Input Voltage: DC12V-24V
- Load Current: 4A×3CH Max 12A
- Grey Scale Level: 4096×4096×4096
- Max Output Power: 144W/288W(12V/24V)
- Working Temperature: -20°C~60°C
- Dimensions: L86×W86×H36(mm)
- Weight(N.W.): 162g

2. Installation Instruction:



— 1 —

3. Key Functions:



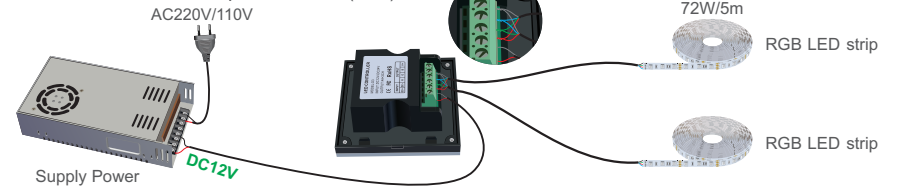
* Long press to turn on/off the buzzer.

The Changing Mode (Press to Switch):

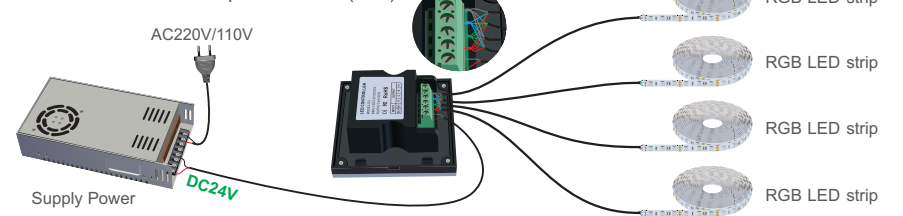
- A. Static Red B. Static Green C. Static Blue D. Static Yellow E. Static Purple F. Static Cyan
- G. Static White H. RGB Skipping I. 7 Colors Skipping J. RGB Smooth K. 7 Colors Smooth

5. Wiring Diagram:

Example 1: Connect with 12V Strip. Max 144W(12V)



Example 2: Connect with 24V Strip. Max 288W(24V)



— 2 —

4. Green Block:

